

***Japońskie lodołamacze.
Od działań bojowych do zabezpieczenia
logistycznego ekspedycji antarktycznych***

GDAŃSK: 17 KWIETNIA 2015

Prof. zw. dr hab. Krzysztof KUBIAK



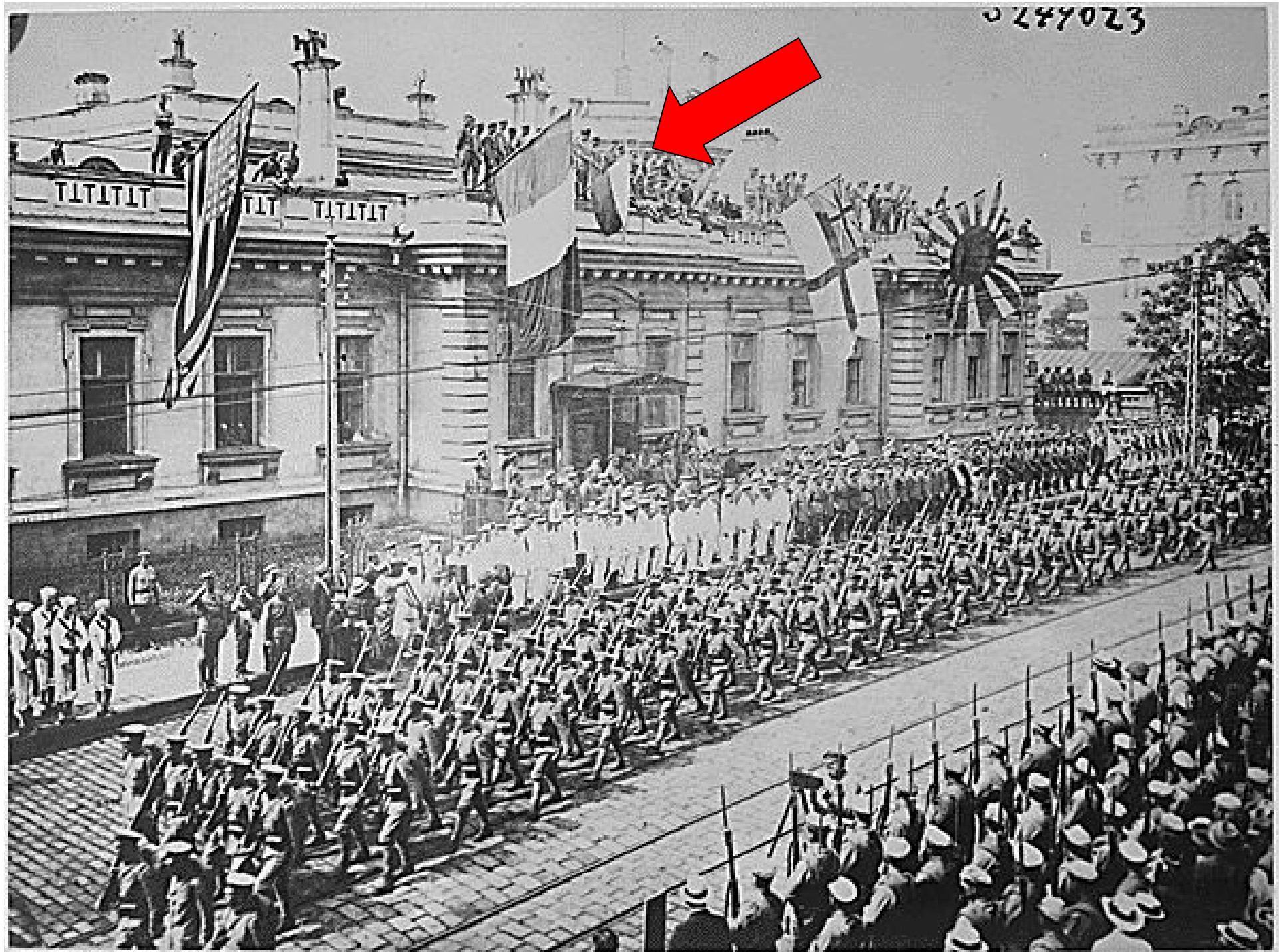


The Deployment of Troops in Siberia, 1918–1920

| ALLIES | FRIENDLY FORCES | HOSTILE FORCES |
|---|--------------------------|------------------------------|
| — British, French, Canadian, American, Italian, Serbs | — Cossacks and Siberians | — Bolsheviks |
| — Japanese | — Poles | — POWs (Austrian and German) |
| | — Crechs | — White Russians |



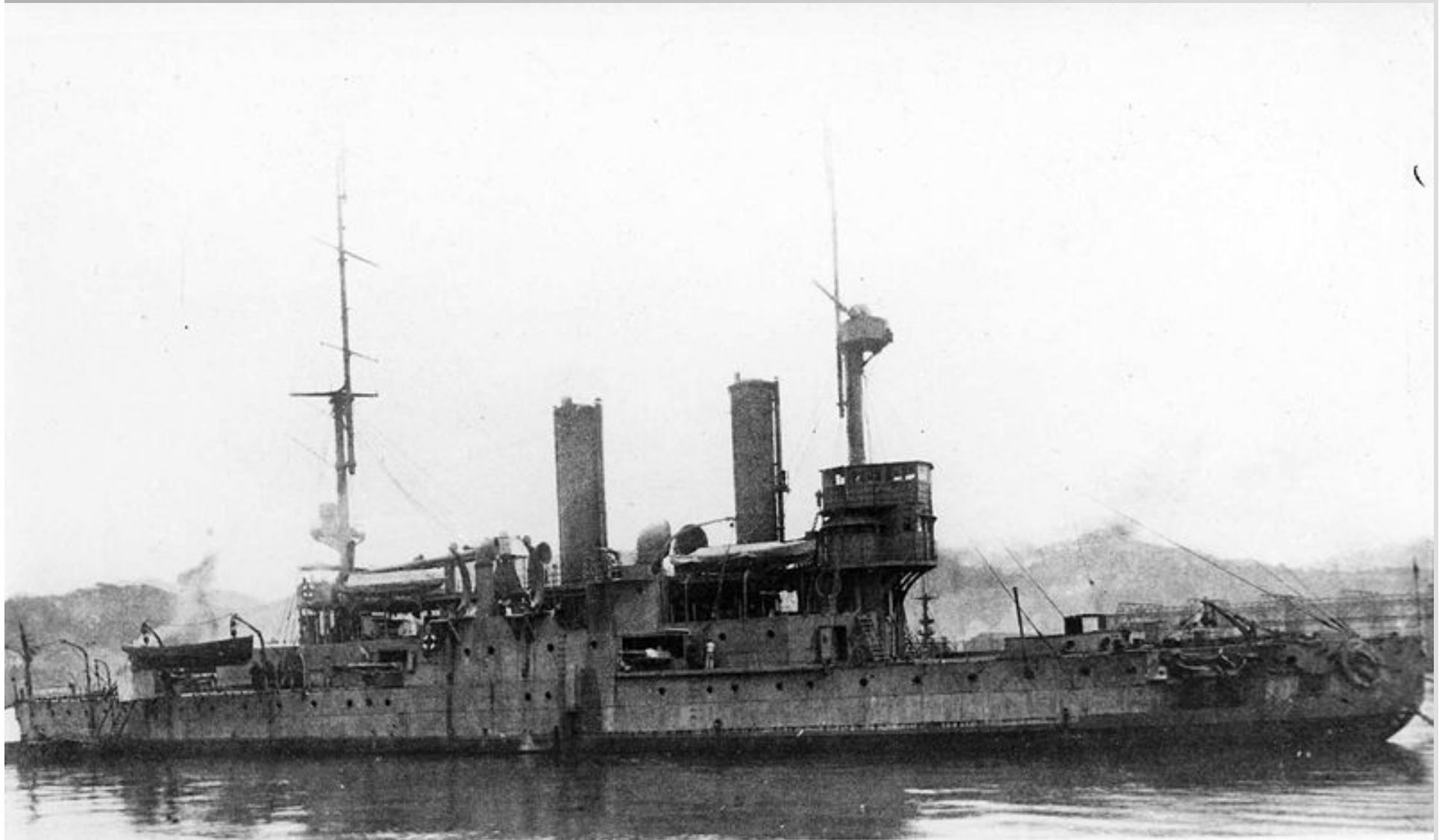
249023





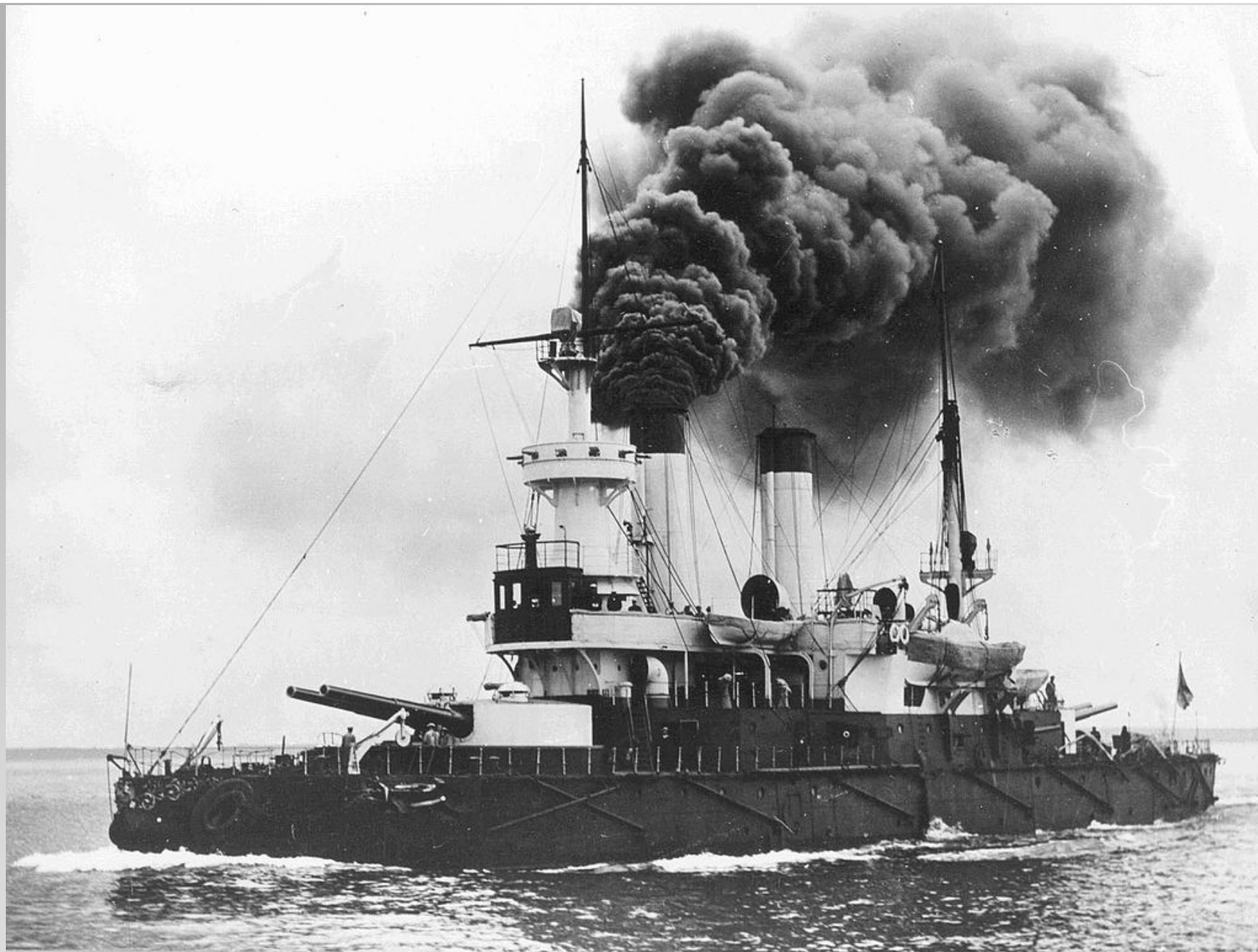
5. Dywizja Strzelców Polskich





MISHIMA

MISHIMA (三島町 *Mishima-machi*) miasto
w dystrykcie *Ōnuma*, w prefekturze *Fukushima*,
na północy *Honshū*.

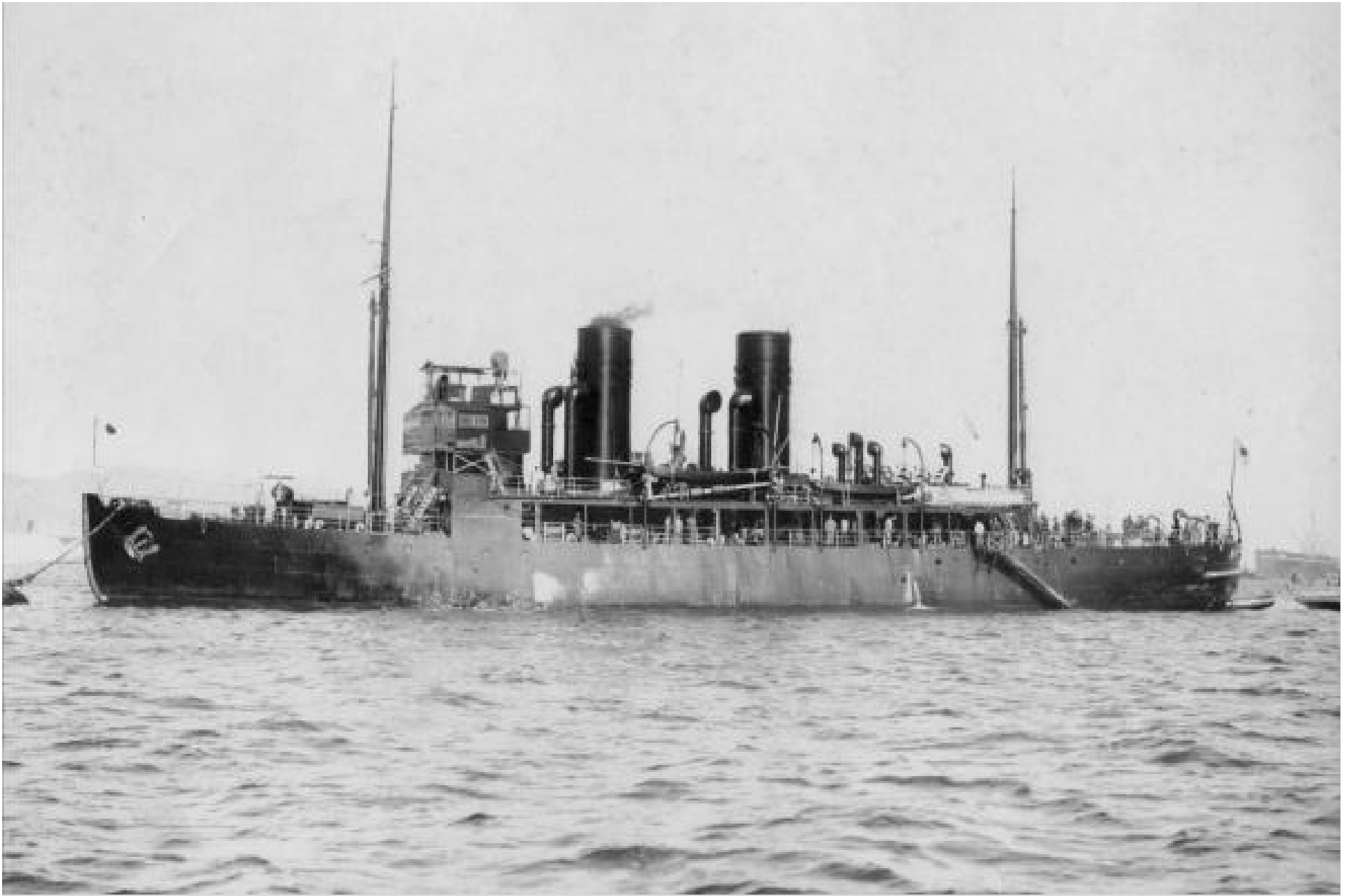


ADMIRAŁ SIENIAWIN

JAPAN

25





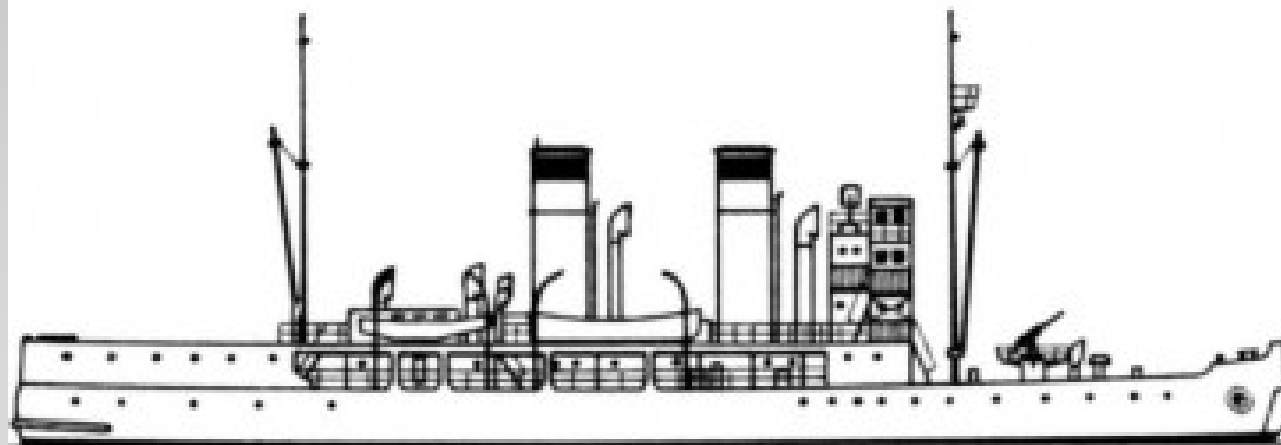
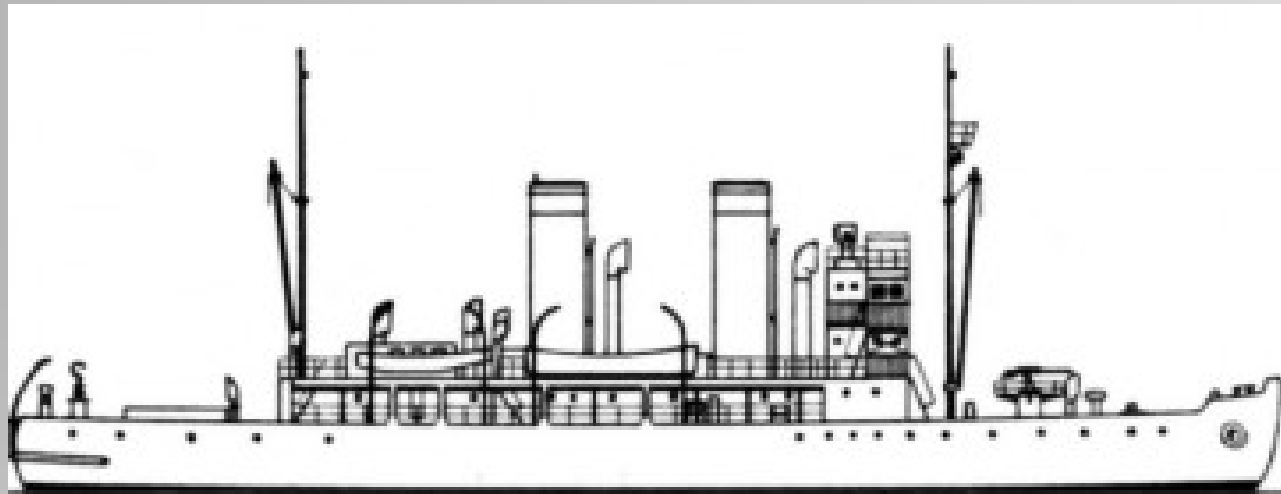
ŌTOMARI

ŌTOMARI – miasto na południowym Sachalinie, przed zajęciem tej części wyspy przez Japonię i obecnie nosi nazwę Korsakov (ros.: *К о р с а́ к о в*).

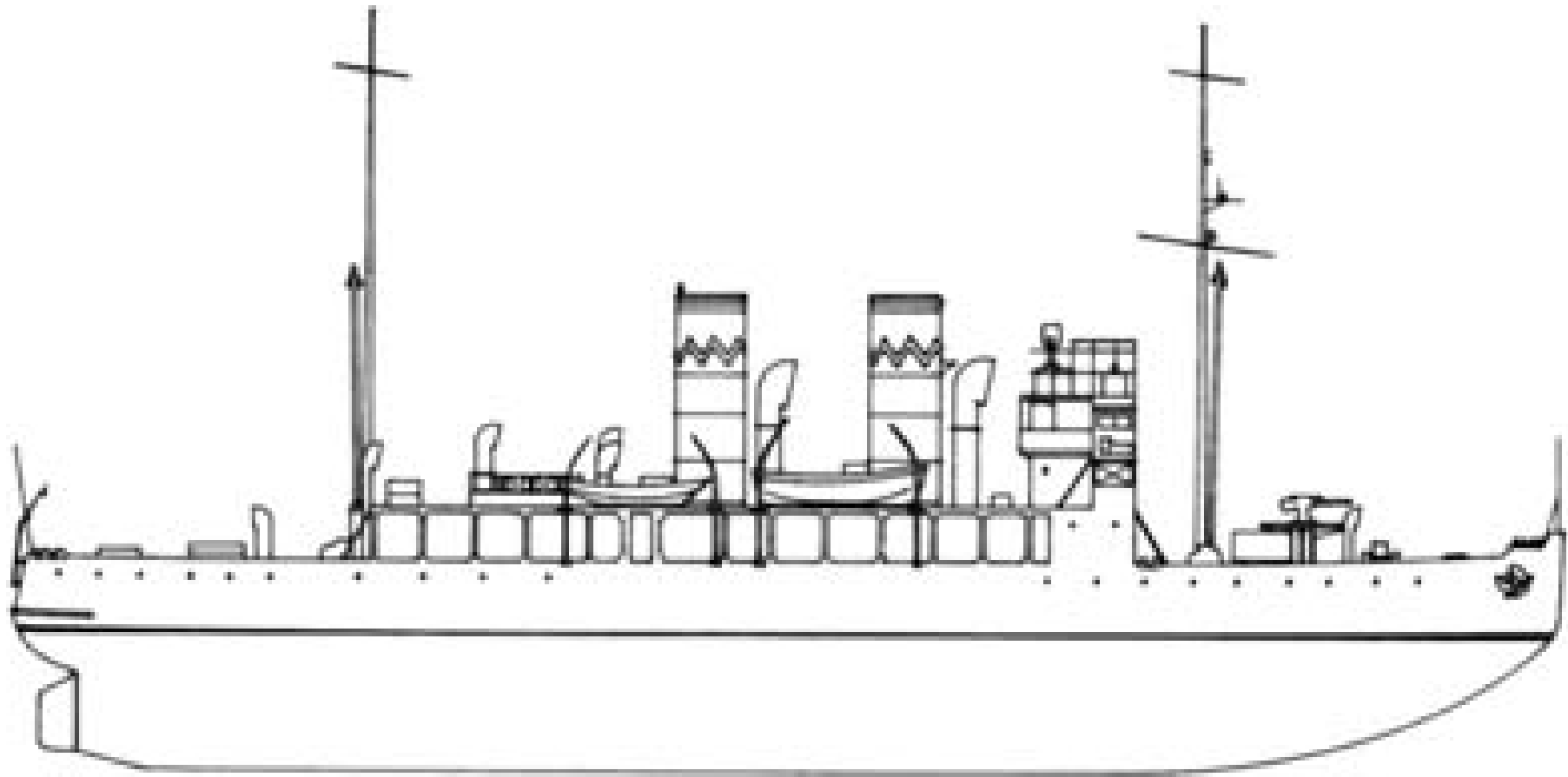
ŌTOMARI



DOBRYNIA NIKITYCZ



ŌTOMARI



ŌTOMARI



SŌYA

SŌYA - (jap. 宗谷総合振興局,
Sōya-sōgō-shikō-kyoku) – podprefektura
w Japonii, w prefekturze Hokkaido.
*Jest to najbardziej wysunięta na północ
podprefektura w Japonii.*



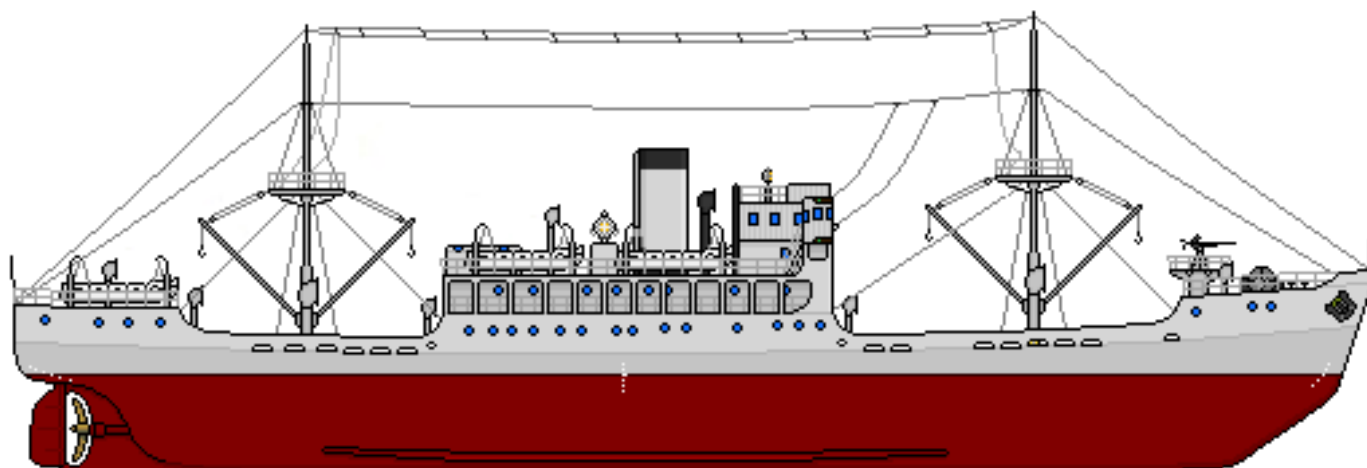
SŌYA (TOKIO)



SOYA

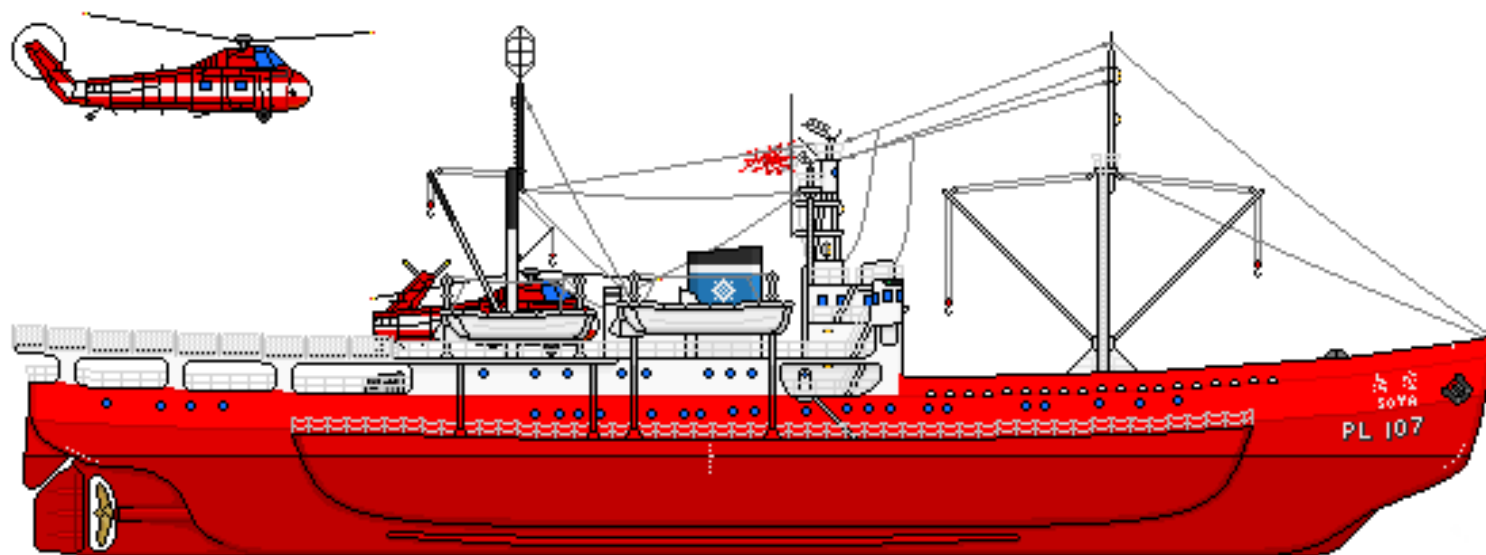


SŌYA



SŌYA 1941

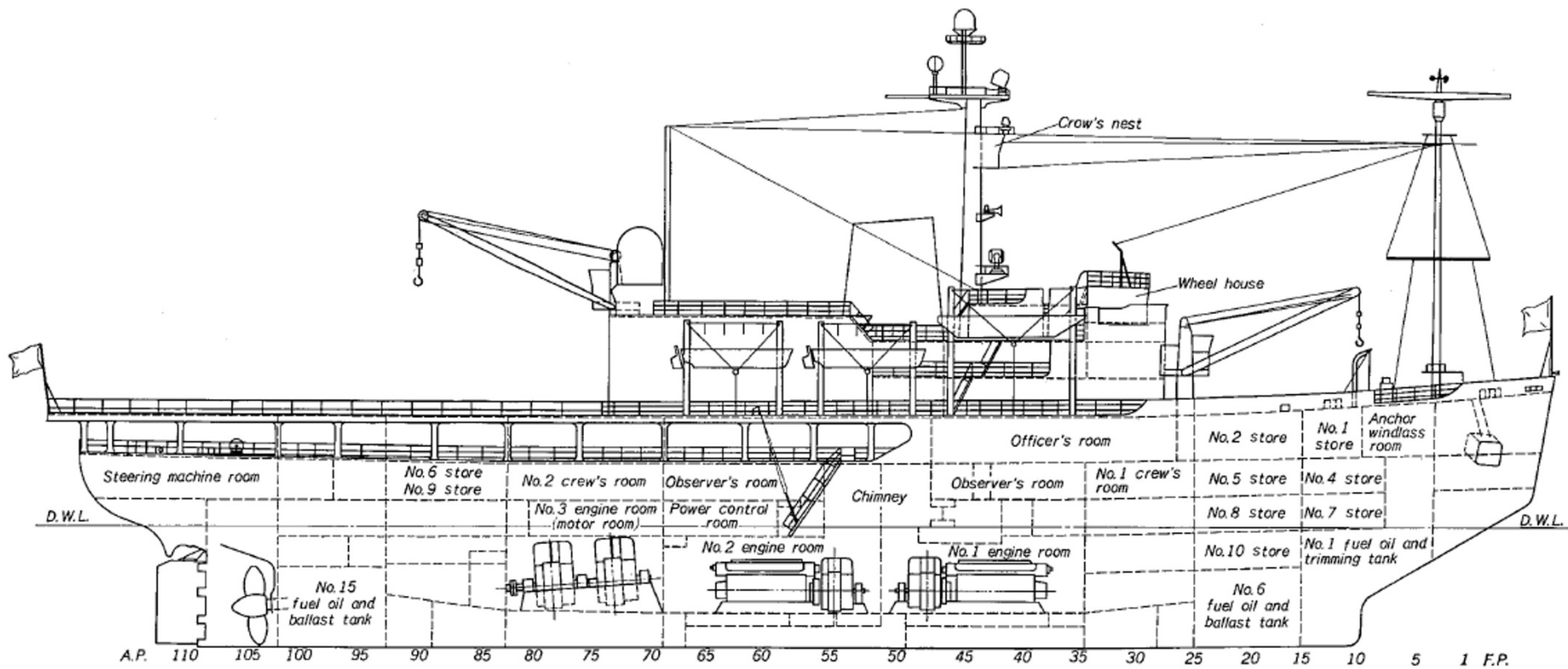
50m 100m



SŌYA 1959



SŌYA – PIERWSZY REJS ANTARKTYCZNY (1956)



FUJI (1964)

FUJI - (jap. 富士山 Fuji-san) – czynny wulkan
i zarazem najwyższy szczyt Japonii (3776 m n.p.m.).
Leży na wyspie Honsiu, na południowy zachód
od stolicy, Tokio.

FUJI



FUJI



FUJI



FUJI



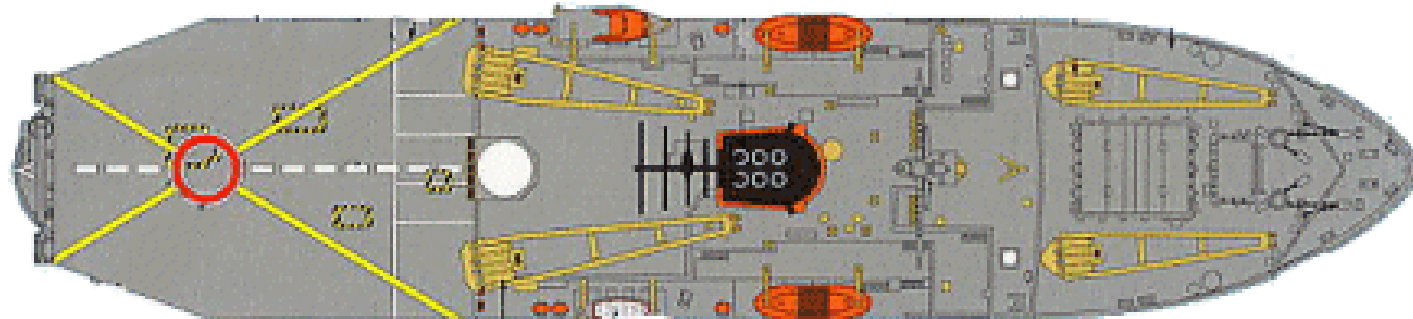
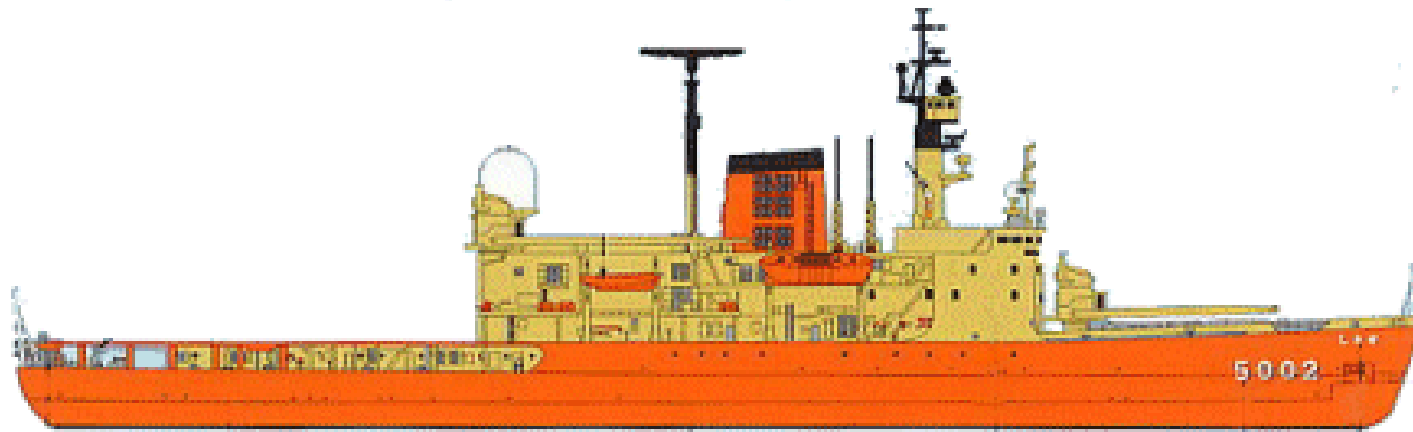
FUJI



FUJI (NAGOYA)



FUJI



SHIRASE [AGB 5002, 1981]



SHIRASE - LODOWIEC



NOBU SHIRASE (1861-1946)



SHIRASE [AGB 5002]



SHIRASE [AGB 5002]



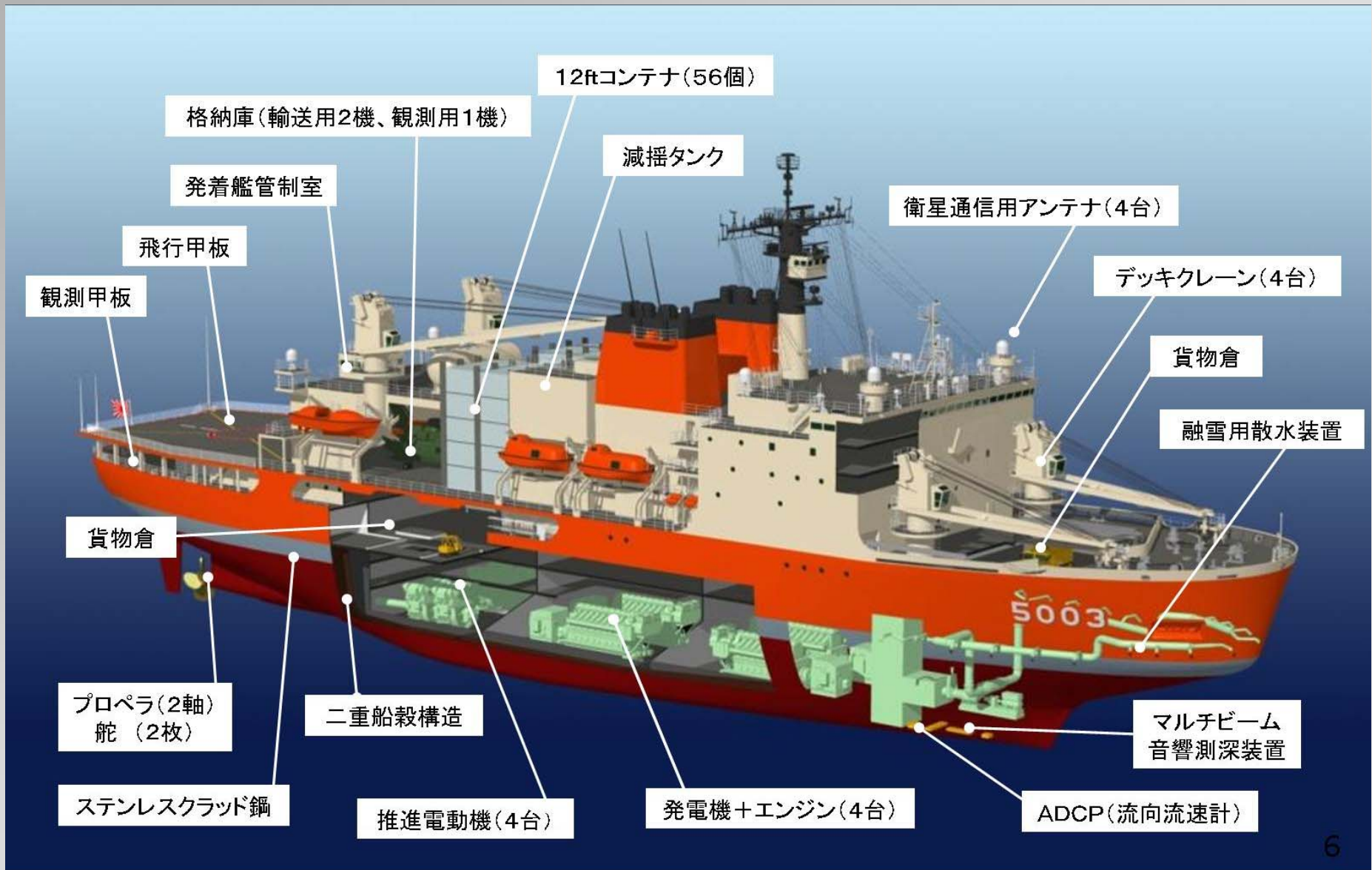
SHIRASE [AGB 5002]



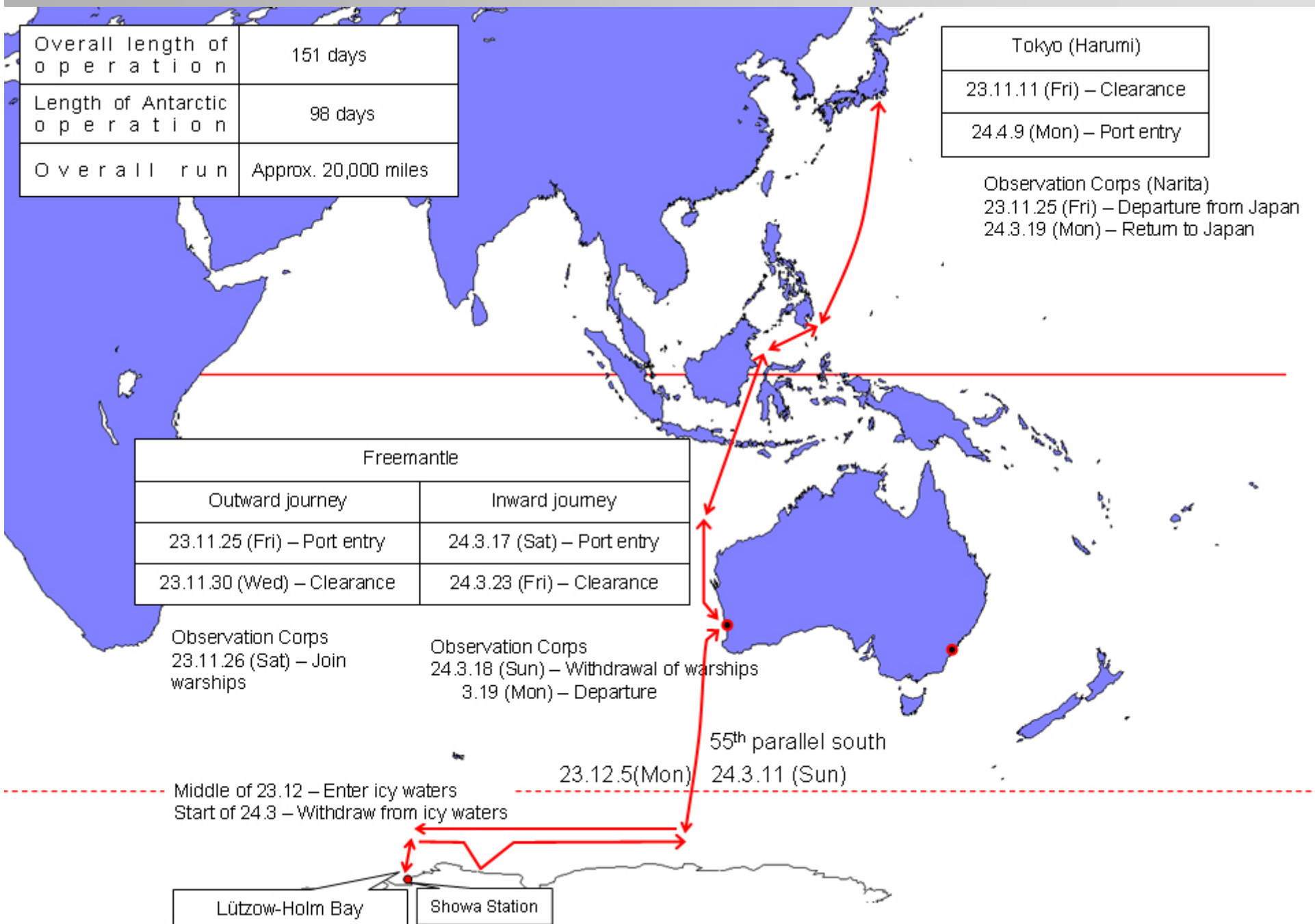
SHIRASE [AGB 5003, 2009]



SHIRASE [AGB 5003]



SHIRASE [AGB 5003]



| | |
|-------------------------------|----------------------|
| Overall length of operation | 151 days |
| Length of Antarctic operation | 98 days |
| Overall run | Approx. 20,000 miles |

| |
|----------------------------|
| Tokyo (Harumi) |
| 23.11.11 (Fri) – Clearance |
| 24.4.9 (Mon) – Port entry |

Observation Corps (Narita)
 23.11.25 (Fri) – Departure from Japan
 24.3.19 (Mon) – Return to Japan

| Fremantle | |
|-----------------------------|----------------------------|
| Outward journey | Inward journey |
| 23.11.25 (Fri) – Port entry | 24.3.17 (Sat) – Port entry |
| 23.11.30 (Wed) – Clearance | 24.3.23 (Fri) – Clearance |

Observation Corps
 23.11.26 (Sat) – Join warships

Observation Corps
 24.3.18 (Sun) – Withdrawal of warships
 3.19 (Mon) – Departure

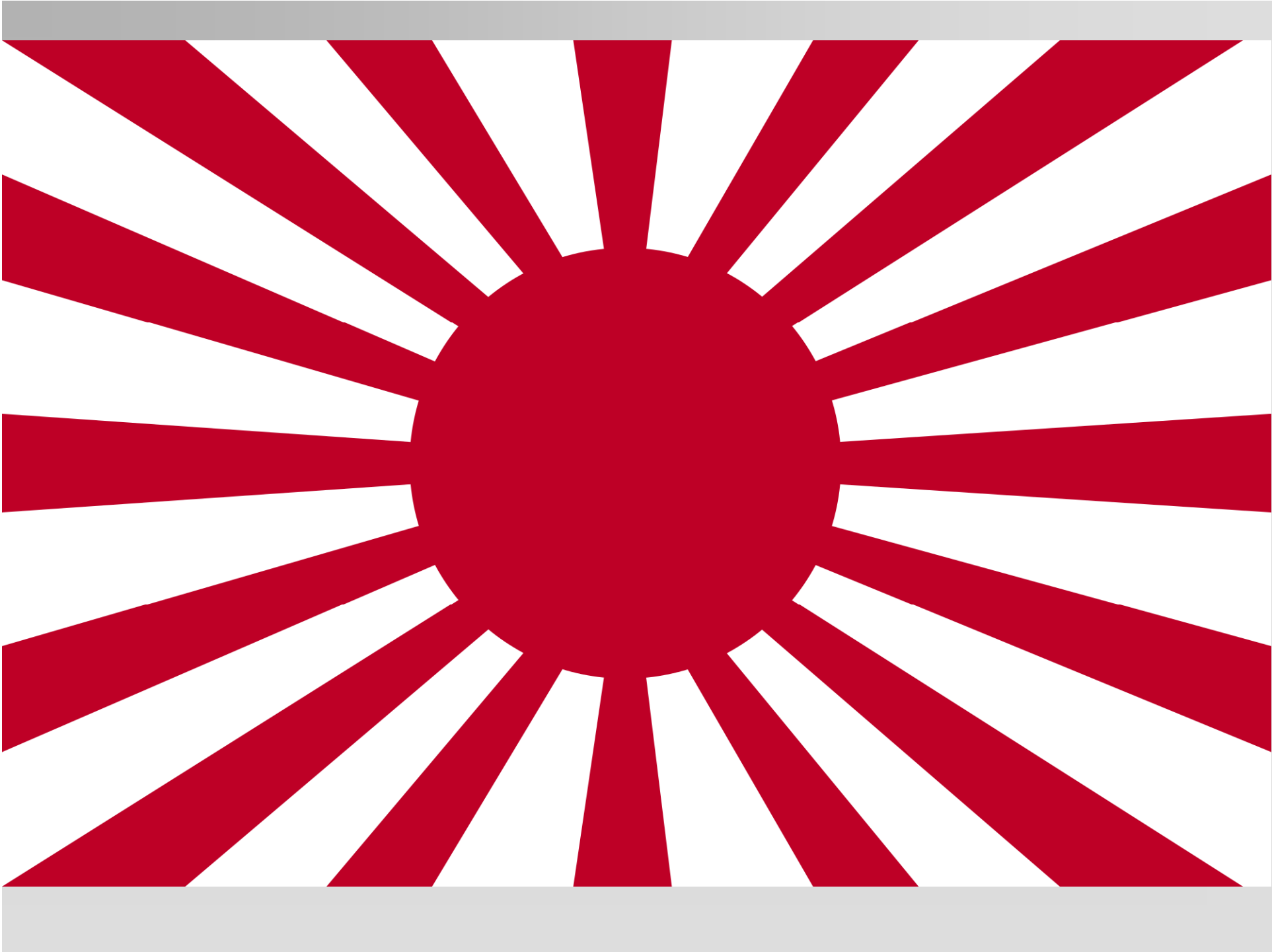
Middle of 23.12 – Enter icy waters
 Start of 24.3 – Withdraw from icy waters

55th parallel south
 23.12.5 (Mon) 24.3.11 (Sun)

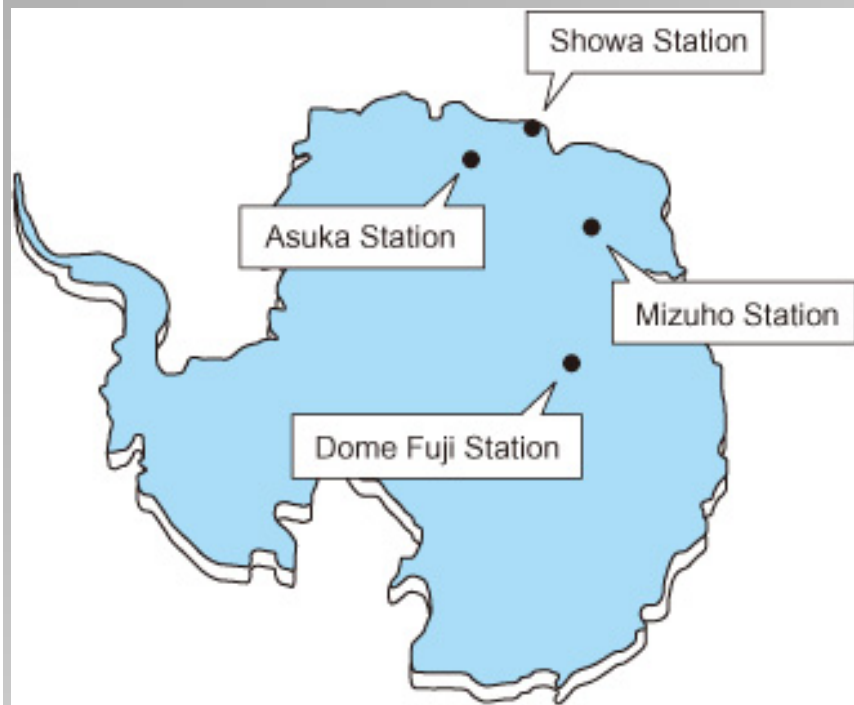
| | |
|-----------------|---------------|
| Lützow-Holm Bay | Showa Station |
|-----------------|---------------|

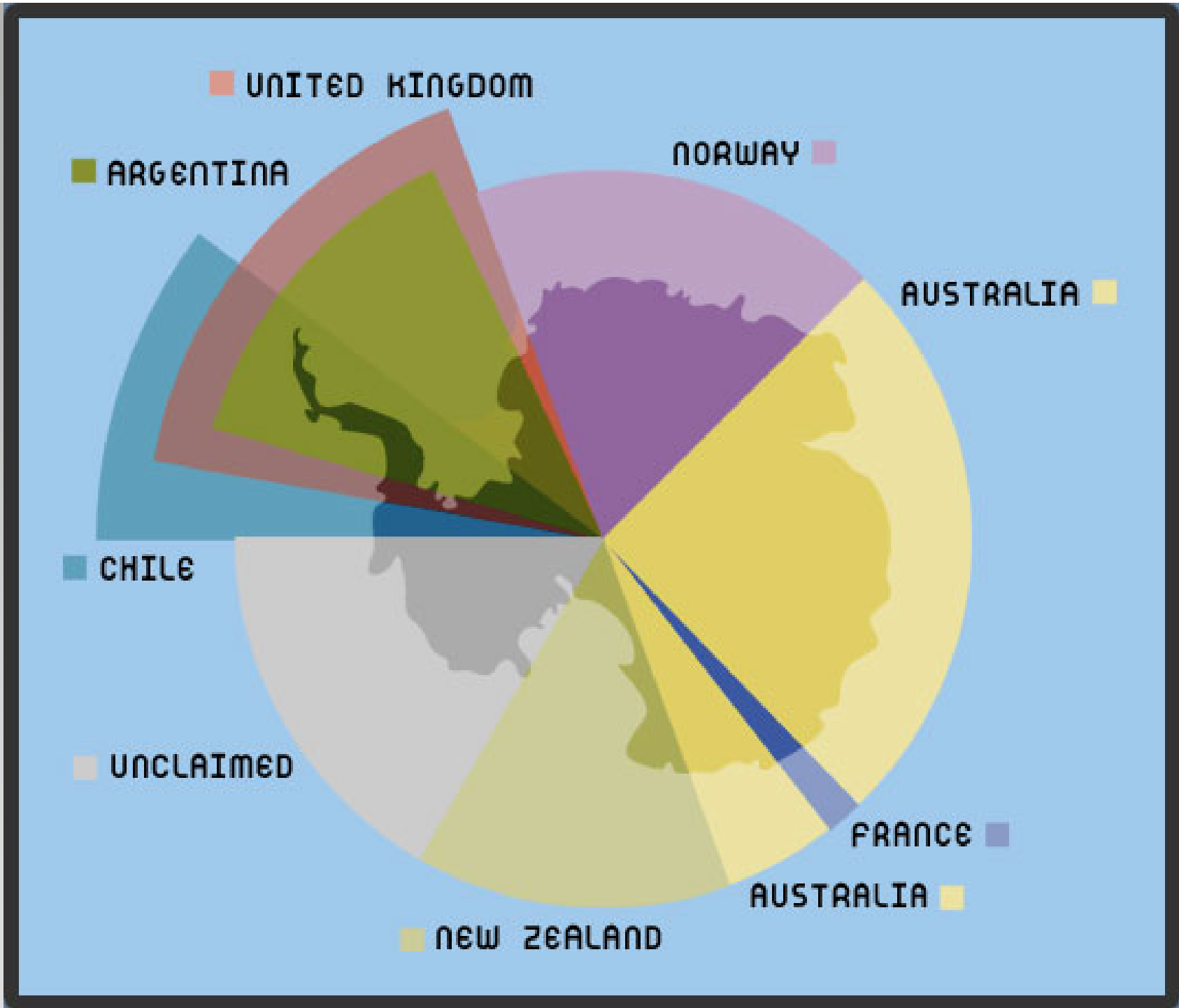


AGB-5003 南極観測船「しらせ」
CH-101 8192









***The great thanks to my friend,
General Yoshinaga HAYASHI, who
tried help me to understand his
beautiful country***



DZIĘKUJĘ ZA UWAGĘ....

